



پژوهش **PEZHVAC**
Research & Innovation Co
پژوهش ایده کاوش سهامی خاص

Technical Visits to Companies Specialized in
PORTS, SHIPPING AND LOGISTIC COMPANIES

BELGIUM - OCTOBER 2023



Summary of Technical Meetings and Visits to Companies Specialized in Ports, Shipping and Logistic Belgium || October 2023

To accomplish its defined goals PEZHVAC Research and Innovation Company familiarizes managers in private sectors in the field of Ports, Shipping and Logistic with the newest technologies and Know-how in order to conduct business between Iran and Europe, some technical visits to related companies in Belgium has been held in October 2023.

In this business trip, a group of managers and experts from Ports, Shipping and Logistic sectors have visited the below mentioned companies during the mentioned period:

- **Antwerp Shipping & Forwarding Co n.v.** (Schaarbeekstraat 20, 9120 Beveren, Belgium)
- **Transport & Logistics Antwerp Expo 2023** (Antwerp Expo Jan Van Rijswijcklaan 191 BE-2020 Antwerpen)
- **Nova Natie Terminals** (Wilmarstraat 416, 2030 Antwerpen, Belgium)
- **Port of Rotterdam** (Rotterdam, The Netherlands)





Thanks for watching this Video

Company	Antwerp Shipping & Forwarding Co n.v.	
Company's Location	Beveren, Belgium	
Appointment's Location	Main Office	
Field of Activity	<p>ASF, established in 1983, specializes in freight transport and forwarding. Over the years, they have built quite a reputation – not only for the smooth handling of all aspects of the logistic chain – but also for their tailor-made approach towards ‘special’ freight, including heavy lift, project cargo, out of gauge transport, etc. their strength lies in their strong international contact, our worldwide network of partners and their longstanding experience with and know-how of all aspects of the supply chain. These solid foundations enable them – if necessary- to think ‘out of the box’ and offer you tailor-made solutions that fit your requirements. Flexible as they may be, all their transactions are subject to the Belgian Freight Forwarding Standard Trading Conditions 2005.</p>	
Website	http://www.asfnv.be/	




A
S
F



The logo for NOVA NATIE is displayed on a white rectangular background with a black border. It features a green stylized arrow icon pointing to the right, followed by the text "NOVA NATIE" in a bold, green, sans-serif font.

NOVA NATIE

Thanks for watching this Video

Company	Nova Natie Terminals	
Company's Location	Antwerpen, Belgium	
Appointment Location	Company's Main Office & Facilities	
Field of Activity	<p>Nova Natie is an established player in the Port of Antwerp. The Group is privately owned with own assets. It operates 120.000 sqm off-dock warehouse capacity, which is located at 3 sites within the Port of Antwerp and an own fleet of trucks, trailers and handling equipment.</p> <p>The company also operates the Churchill Terminal Q416-430, which is situated at the Churchill dock at the right bank of the Port of Antwerp. The terminal has a total surface of 27 ha, offers 70.000 sqm warehouse capacity and 1,2 km quay length for handling deep-sea vessels, coasters and barges. They specialize in container handlings, RORO, bulk and breakbulk cargoes such as machinery, metals & steel, timber & plywood and soft commodities.</p>	
Website	https://www.nova.be/	



**N
o
v
a

N
a
t
i
e**





 **TRANSPORT
& LOGISTICS**

LET'S MOVE THE FUTURE FORWARD

**ANTWERP
EXPO** | 17-18-19
OCTOBER 2023

**REGISTER
NOW**

The advertisement features a central white banner with a black border. On the left, there is a logo consisting of three overlapping shapes in red, blue, and yellow, resembling a stylized 'A' or a location pin. To the right of the logo, the text 'TRANSPORT & LOGISTICS' is written in a bold, sans-serif font. Below this, the tagline 'LET'S MOVE THE FUTURE FORWARD' is displayed in a smaller font. Further down, the event details 'ANTWERP EXPO' are enclosed in a red rounded rectangle, followed by the dates '17-18-19' and 'OCTOBER 2023'. On the right side of the banner, there is a circular inset image showing a large cargo ship at a port, with a red banner overlaid on it that says 'REGISTER NOW' in white capital letters. The background of the entire advertisement is dark grey.

Thanks for watching this Video

Company	Transport & Logistics Antwerp Expo 2023	
Company's Location	Antwerpen, Belgium	
Appointment Location	17th, 18th & 19th of October 2023 at Antwerp Expo.	
Field of Activity	Transport & Logistics - Antwerp 2023 will be held from 17th - 19th October, 2023 at Antwerp expo, Antwerpen, Belgium. That is a leading Multimodal and Logistics Exhibition in Antwerpen. It is a unique platform to put your products, services or solutions like Warehousing, Logistics software etc., for the industrial and logistics real estate and construction market in the spotlight.	
Website	https://www.transport-logistics.be	



**E
x
p
o

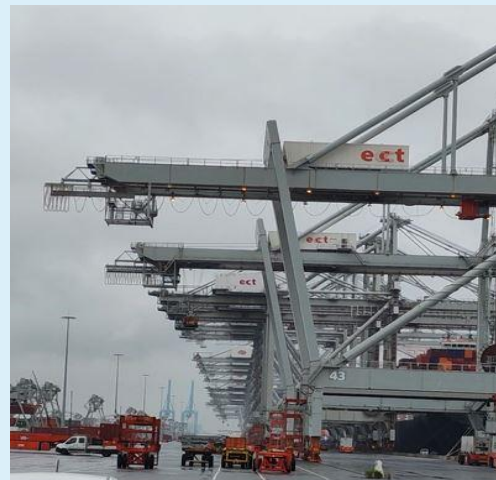
2
0
2
3**





Thanks for watching this Video

Company	Port of Rotterdam	
Company's Location	Rotterdam, The Netherlands	
Appointment Location	Ports	
Field of Activity	<p>The port of Rotterdam is the largest port in Europe. We manage, operate and develop the Rotterdam port and industrial area and are responsible for ensuring safe and expedient shipping services. We are proud of our current port and are working hard with our partners to build the port of the future. Looking ahead, we aim to create an environmentally-friendly, inclusive and safe port.</p> <p>Also if you are a captain, a shipper, a resident of Rotterdam, a tourist, a future colleague or media, Here you will find everything you need to know about the port: from business services to interesting jobs, press releases and news, to information about harbour tours.</p>	
Website	https://www.portofrotterdam.com/en	



P
o
r
t
t
e
r
d
a
m





**Every industrial revolution brings
along a learning revolution.**

Alexander De Croo
Prime Minister of Belgium

Thank you.

Pezhvac Co., Tehran, Iran
October 2023

